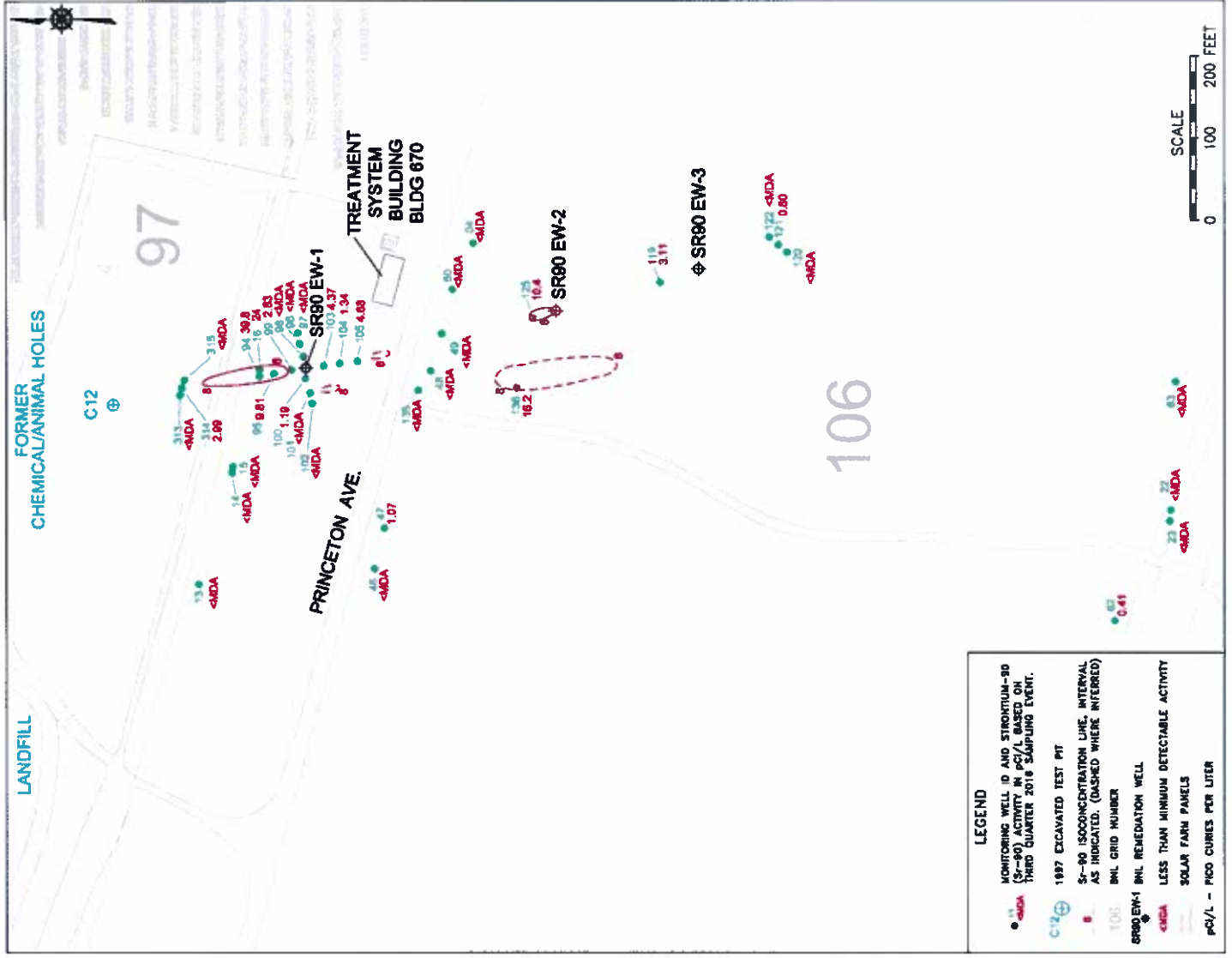


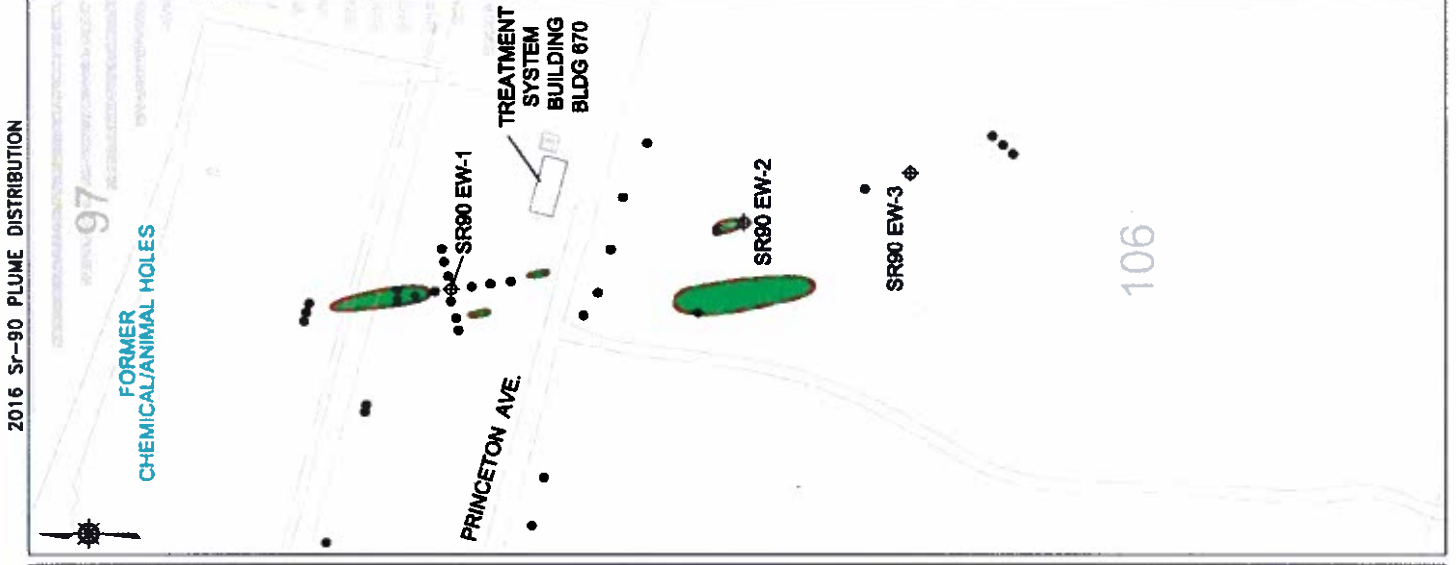
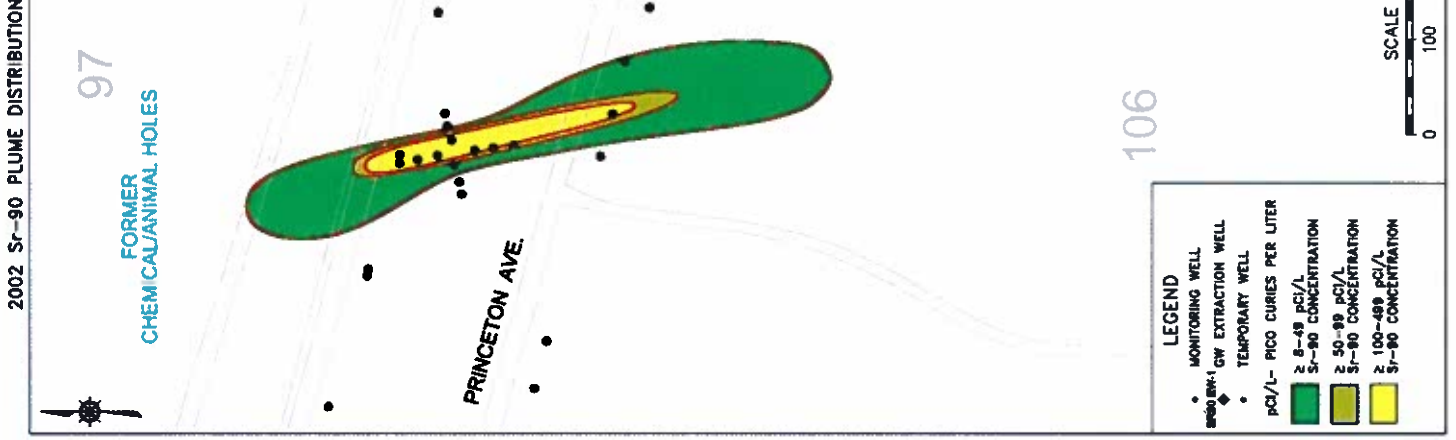
OU III Chemical / Animal Holes

- Treatment system began operation in 2003. Due to the low Sr-90 concentrations observed in the monitoring wells since mid-2015, a petition for shutdown will be submitted to the regulators in the fall of 2017.
- Until approval of the petition for shutdown is approved by the regulators, continue to operate extraction well EW-1 in pulsed pumping mode (one month on and one month off) and maintain EW-2 and EW-3 in standby.



OU III Chemical / Animal Holes

- Treatment system began operation in 2003. Due to the low Sr-90 concentrations observed in the monitoring wells since mid-2015, a petition for shutdown will be submitted to the regulators in the fall of 2017.
- Until approval of the petition for shutdown is approved by the regulators, continue to operate extraction well EW-1 in pulsed pumping mode (one month on and one month off) and maintain EW-2 and EW-3 in standby.



OU III BGRRWCF Sr-90

2004



2008



2016

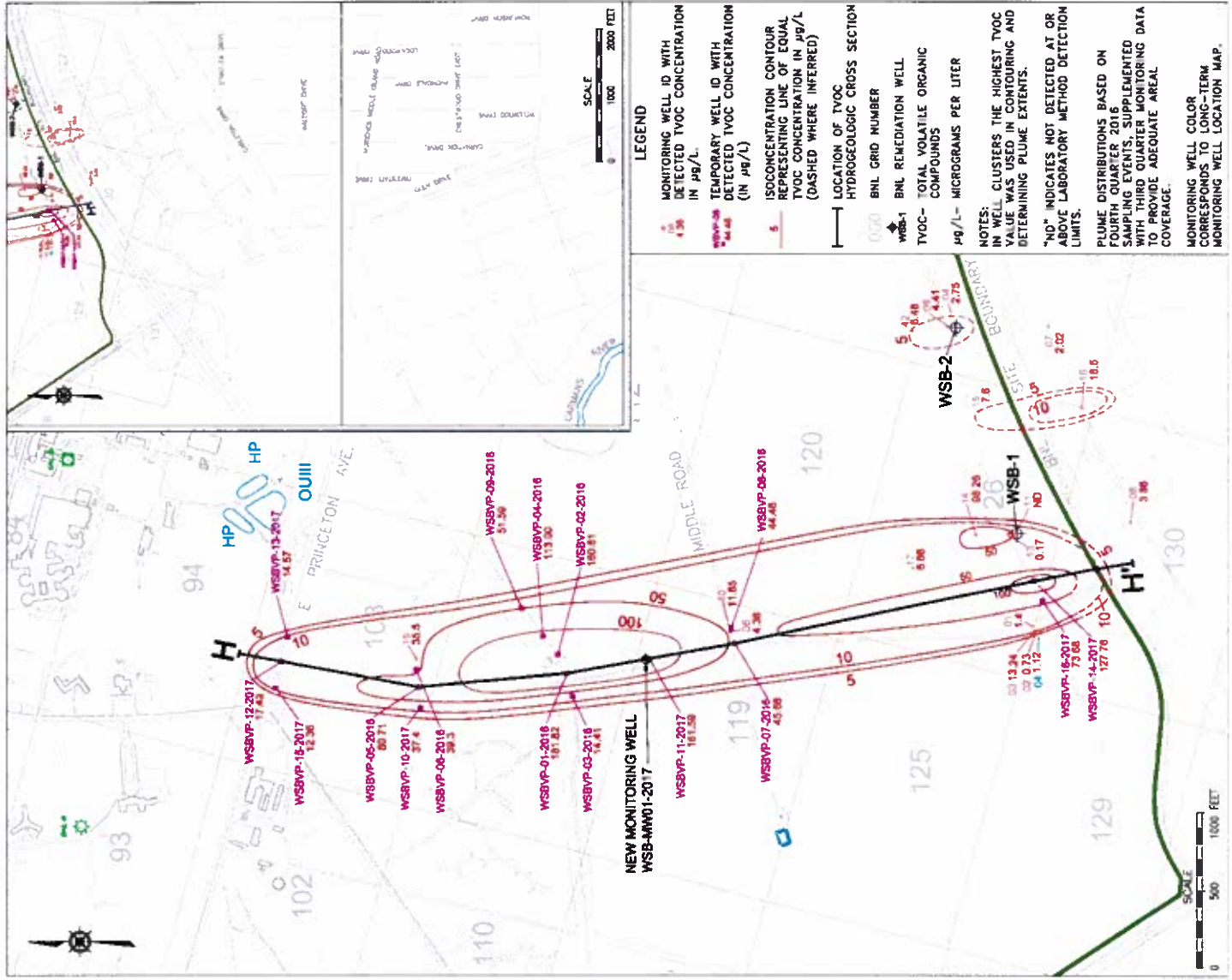


LEGEND

- TEMPORARY WELL
- MONITORING WELL
- OF EXTRACTION WELL
- BORR - BROOKHAVEN ORANGE WHITE RESEARCH REACTOR
- HFR - HIGH FLUX BEAM REACTOR
- PC/L - PICO CURIES PER LITER
- 2-99 - PC/L CONCENTRATION
- 10-99 - PC/L
- 100-999 - PC/L
- 1000 - 9999 - PC/L
- 2000 - PC/L CONCENTRATION

OU III Western South Boundary

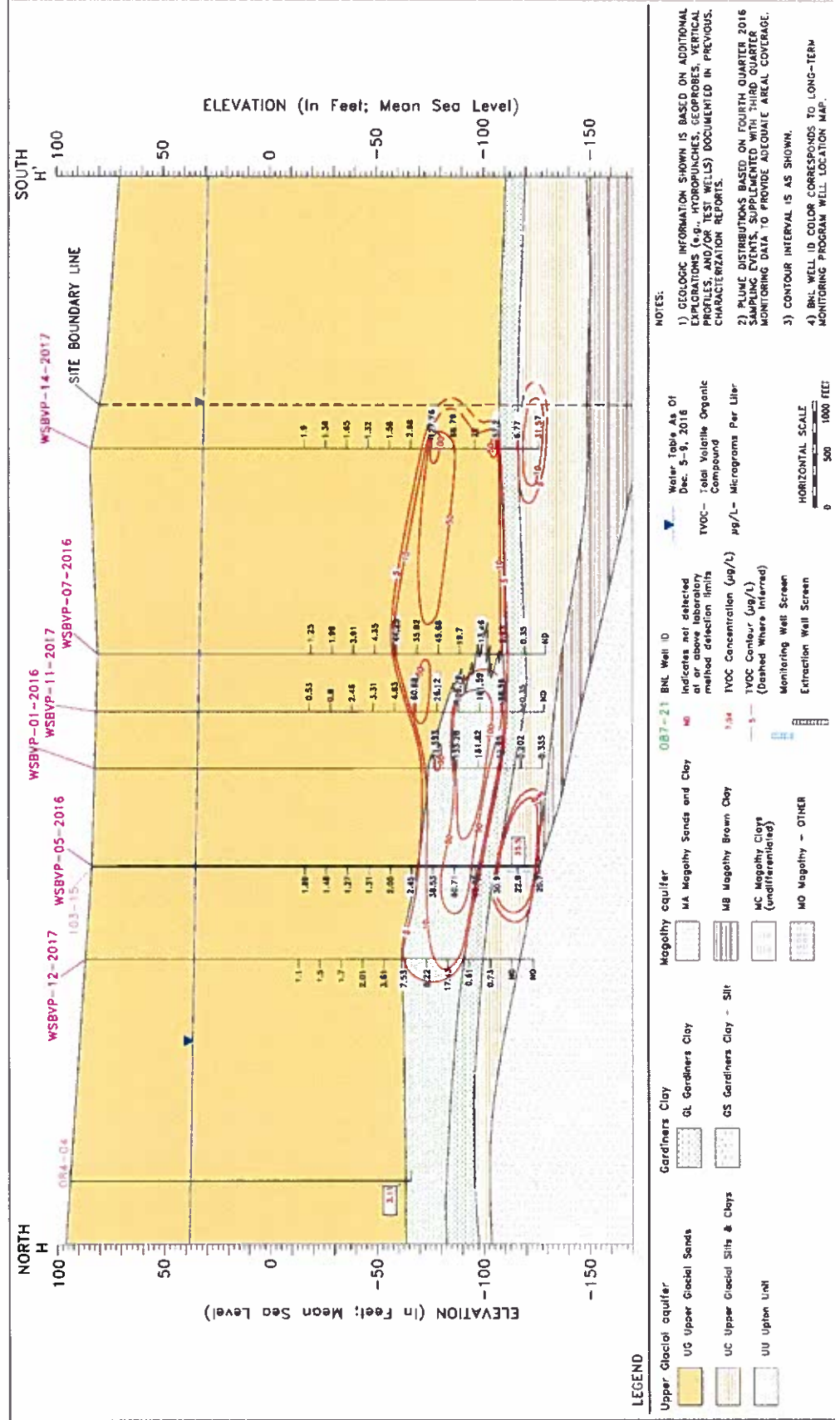
- Last updated CAC June 2017
- Characterized on-site extent of VOCs (TCA, DCE, Freon-12)



OU III Western South

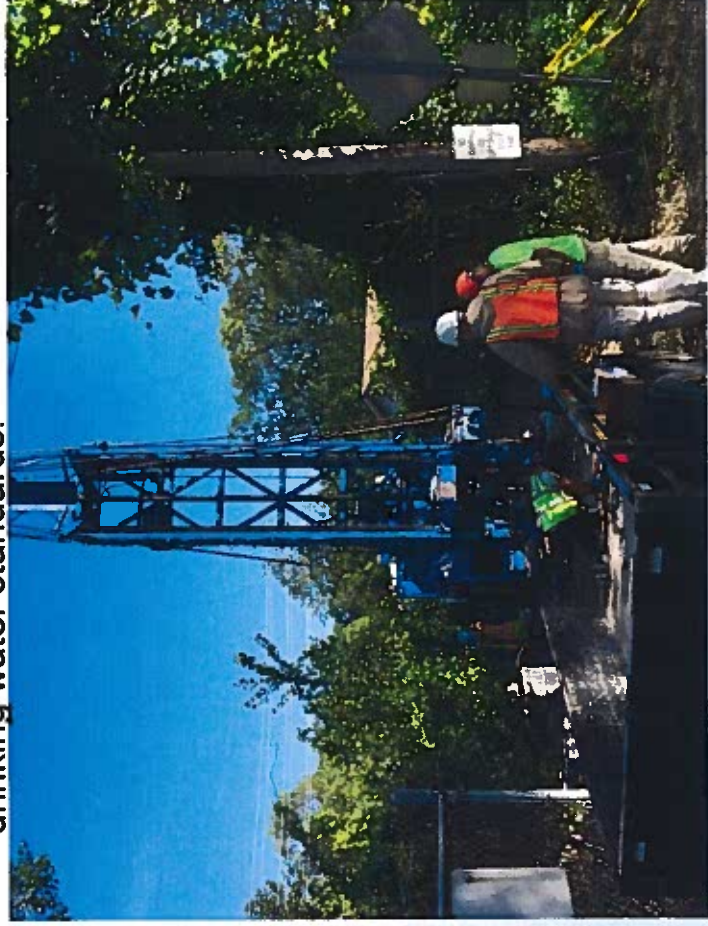
Boundary

- Last updated CAC June 2017
- Characterized on-site extent of VOCs (TCA, DCE, Freon-12)



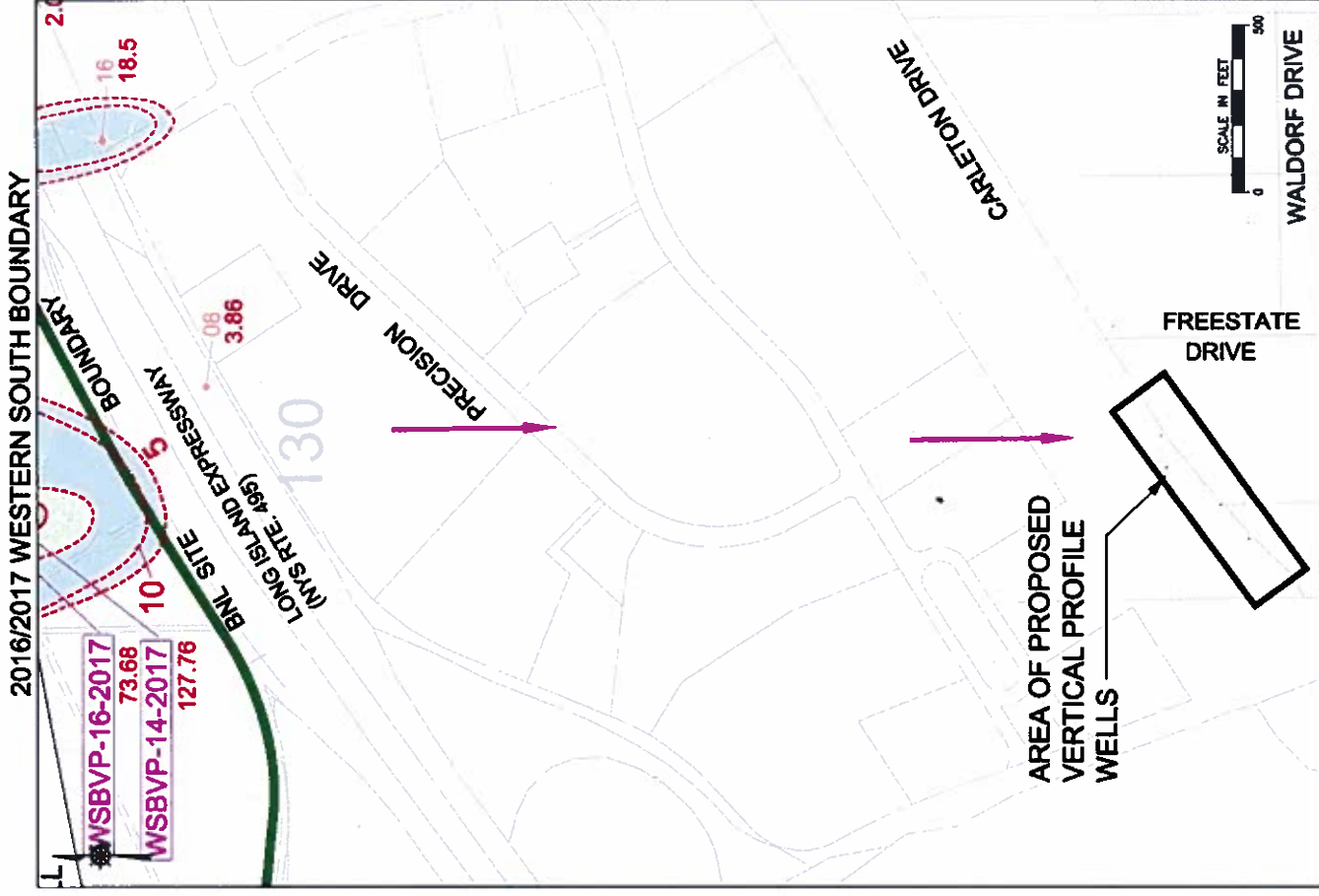
OU III Western South Boundary

- Currently installing 4 vertical profile wells located along an east-west transect along Carleton Dr. in E. Yaphank to depths of ~250 feet below ground surface.
- Canvassed homes surrounding drilling location area to discuss upcoming sampling.
- Evaluate sample results and determine whether additional data are needed.
- Model the attenuation of the deeper VOCs and evaluate migration/attenuation of the plume and ability to meet the cleanup goal of drinking water standards.



OU III Western South Boundary

- Currently installing 4 vertical profile wells located along an east-west transect along Carleton Dr. in E. Yaphank to depths of ~250 feet below ground surface.
- Canvassed homes surrounding drilling location area to discuss upcoming sampling.
- Evaluate sample results and determine whether additional data are needed.
- Model the attenuation of the deeper VOCs and evaluate migration/attenuation of the plume and ability to meet the cleanup goal of drinking water standards.



OU III Western South Boundary

- Currently installing 4 vertical profile wells located along an east-west transect along Carleton Dr. in E. Yaphank to depths of ~250 feet below ground surface.
- Canvassed homes surrounding drilling location area to discuss upcoming sampling.
- Evaluate sample results and determine whether additional data are needed.
- Model the attenuation of the deeper VOCs and evaluate migration/attenuation of the plume and ability to meet the cleanup goal of drinking water standards.

